



### EXAMPLES OF BLEACHING



*Mycetophyllia ferox*

**Common Name:**  
Knobby Cactus Coral  
**Coral Type:**  
Fleshy  
**Bleaching Severity:**  
No Bleaching



**Common Name:**  
Staghorn Coral  
**Coral Type:**  
Branching  
**Bleaching Severity:**  
No Bleaching



*Acropora cervicornis*

**NO BLEACHING**



*Eusmilia fastigiana*

**Common Name:**  
Flower Coral  
**Coral Type:**  
Flower / Cup  
**Bleaching Severity:**  
No Bleaching



**Common Name:**  
Lettuce Coral  
**Coral Type:**  
Leaf / Plate / Sheet  
**Bleaching Severity:**  
No Bleaching



*Undaria agaricites*

**PALING**

**Common Name:**  
Massive Starlet Coral  
**Coral Type:**  
Mound and Boulder  
**Bleaching Severity:**  
Paling



*Siderastrea siderea*

**BLEACHED**

**Common Name:**  
Finger Coral  
**Coral Type:**  
Branching  
**Bleaching Severity:**  
Bleached



*Porites porites*

**Common Name:**  
Boulder Brain Coral  
**Coral Type:**  
Mound and Boulder  
**Bleaching Severity:**  
Paling



*Colpophyllia natans*

**Common Name:**  
Mountainous Star Coral  
**Coral Type:**  
Mound and Boulder  
**Bleaching Severity:**  
Bleached



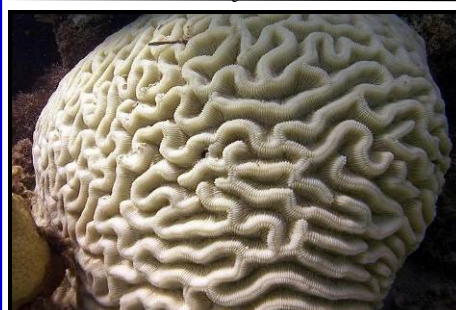
*Orbicella faveolata*

**Common Name:**  
Boulder Star Coral  
**Coral Type:**  
Mound and Boulder  
**Bleaching Severity:**  
Upper Surface / Paling



*Orbicella annularis*

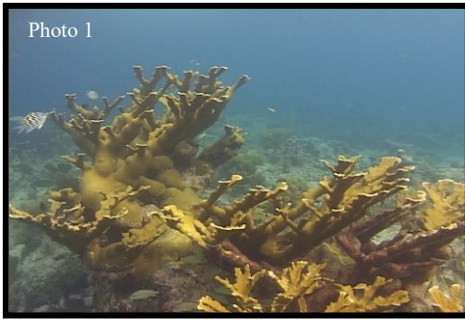
**Common Name:**  
Boulder Brain Coral  
**Coral Type:**  
Mound and Boulder  
**Bleaching Severity:**  
Bleached



*Colpophyllia natans*



# PROGRESSION OF CORAL BLEACHING.....



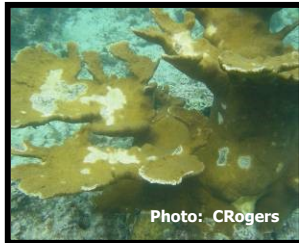
The above photos illustrate a time line of bleaching for Elkhorn Coral *Acropora palmata*. Photo 1 is a healthy colony with a brown tint provided by the zooxanthellae. Photo 2 the entire colony has expelled their zooxanthellae causing a “bleached” white appearance. Photo 3 the colony was not able to regain the zooxanthellae and mortality and algae growth has occurred.

## HELPFUL TIPS ON IDENTIFICATION....



### Black-Band Disease

- Forms a dark ring usually starting on the outer edges of the coral.
- Found on many species.



### White Pox Disease

- Forms small white patches of denuded skeleton
- Affects Elkhorn and Staghorn coral.



### Yellow-Band Disease

- Circular yellow tissue with eventual dead in the center.
- Mainly Brain and Boulder corals.



### White Band Disease

- Tissue peels off skeleton from base to branch tips at uniform rate
- Found on *Acropora* species.



### White Plague Disease

- Forms a distinct disease line on outer edges of the coral.
- Found on many species.



### Fish Bites

- Usually found in pairs from beak marks of parrot fish.
- Found on all species.

## NON-STONY CORALS AND BLEACHING



*Millepora alcicornis*

### Fire Coral

- Is a hydrocoral, not stony coral like rest
- Has stinging polyps
- Is encrusting
- Family Milleporidae

### Palythoa

- Is a Cnidarian, not stony coral like rest
- Similar to anemones
- Is encrusting
- Family Zoanthidea



*Palythoa caribaeorum*

