



Florida Keys BleachWatch Program

Current Conditions Report #20080602



June 2, 2008

Summary: Based on climate predictions, current conditions, and field observations, the threat for mass coral bleaching within the FKNMS is currently **LOW**.

Weather and Sea Temperatures

Current remote sensing analysis by NOAA's Coral Reef Watch program shows that current conditions in the Florida Keys do not indicate signs of building thermal stress. NOAA's recent Coral Bleaching HotSpot Map (Figure1), current SST's compared to the historically expected SST's for the region, shows no current elevated temperature anomalies for the Florida Keys. Similarly, NOAA's latest Degree Heating Weeks (DHW) map, which indicates the accumulation of elevated temperature in an area based on the previous 12 weeks (Figure2), shows no accumulating temperature stress in the Florida Keys region. NOAA's Integrated Coral Observing Network (ICON) monitoring stations indicate that sea temperatures throughout the Florida Keys, at least along the outer reef tract, are still currently well below 30°C (Figure3). *In-situ* sea temperature data is still not available for the Sand Key region.

Mote Marine Laboratory will continue to monitor the NOAA HotSpot maps, DHW maps, and ICON sea temperature data from NOAA monitoring stations on a weekly basis for the remainder of the bleaching season.

Observer Network Training



For information on joining the BleachWatch program, or to organize a training session for your group or organization, please contact the number below.

Frequent coral condition observations from throughout the Florida Keys are needed for the remainder of the summer season. Please be sure to submit your observations after every visit to the reef, **even if no bleaching was observed**. To submit an observation on coral condition, or for more information on the Florida Keys BleachWatch program, please go to www.mote.org/Keys/bleaching.phtml, or contact:

Cory Walter

Mote Marine Laboratory
(305) 745-2729 x301
cwalter@mote.org

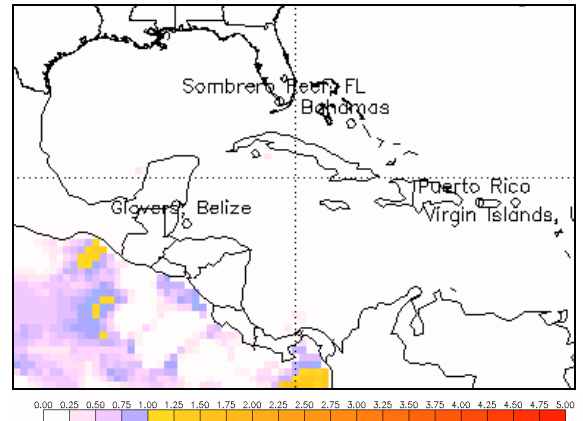


Figure 1. NOAA's Coral Bleaching HotSpot Map for May 29, 2008.

www.osdpd.noaa.gov/PSB/EPS/SST/climohot.html

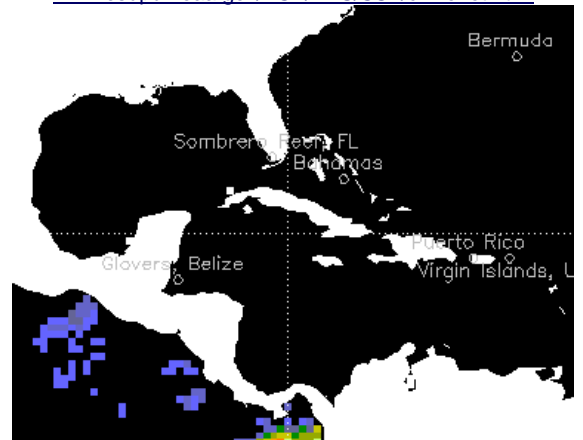


Figure 2. NOAA's Degree Heating Weeks Map for May 29, 2008.

www.osdpd.noaa.gov/PSB/EPS/SST/dhw_retro.html

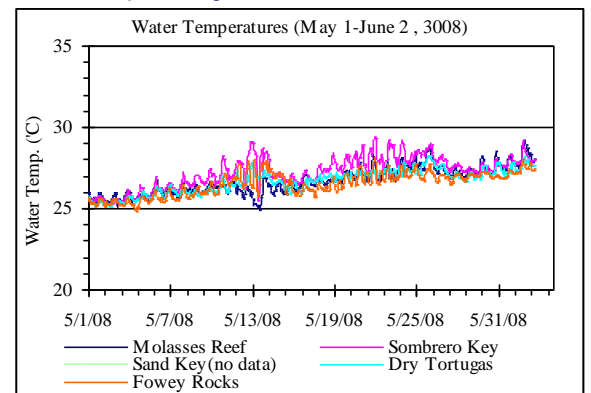


Figure 3. Summary of *in-situ* sea temperature data from NOAA/ICON monitoring stations from May 1-June 2, 2008.