

Updated July 27, 2018

Summary: Based on climate predictions, current conditions, and field observations, the threat for mass coral bleaching within the FKNMS is currently **MODERATE**.

NOAA Coral Reef Watch Current and 60% Probability Coral Bleaching Alert Outlook July 25, 2018 (experimental)

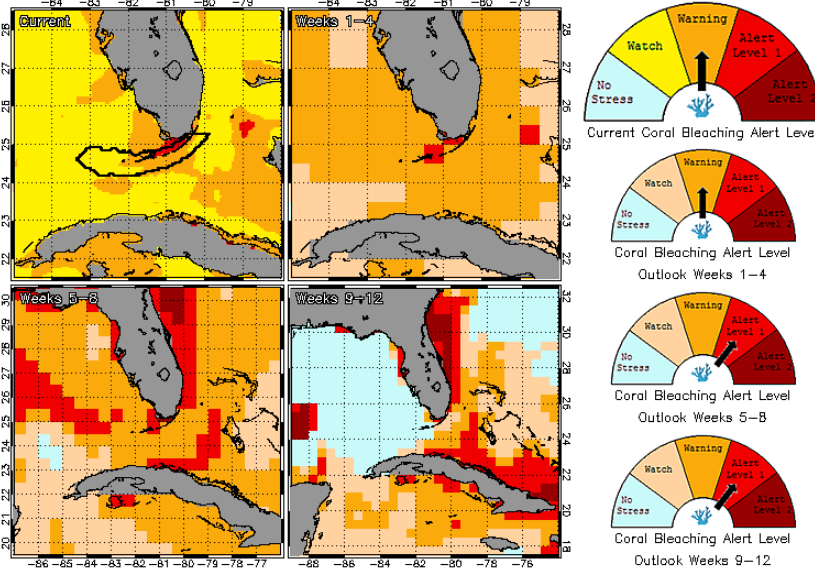


Figure 1. NOAA's 5 km Experimental Current and 60% Probability Coral Bleaching Alert Outlook Areas through October, 2018. Updated July 25, 2018. coralreefwatch.noaa.gov/vs/gauges/florida_keys.php

Weather and Sea Temperatures

According to the newly released NOAA Coral Reef Watch (CRW) experimental 5 kilometer (km) Satellite Current and 60% Probability Coral Bleaching Alert Area, most areas of the Florida Keys National Marine Sanctuary are under a bleaching Warning or Alert Level 1, which means bleaching is likely and potential for more bleaching warnings and alerts if sea temperatures continue to increase in the next few weeks (Fig. 1).

Recent remote sensing analysis by NOAA's CRW program indicates that most of the Florida Keys region is currently experiencing thermal stress. NOAA's new experimental 5 km Coral Bleaching HotSpot Map (Fig. 2), which illustrates current sea surface temperatures compared to the average temperature for the warmest month, shows elevated temperatures for the Florida Keys. Similarly, NOAA's experimental 5 km Degree Heating Weeks (DHW) map, which illustrates how much heat stress has built up over the past 12 weeks (Fig.3), indicates accumulating temperature stress currently evident in the Florida Keys region. NOAA's Integrated Coral Observing Network (ICON) monitoring stations, which provide near real time in-situ sea temperature data along the outer reef tract throughout the Florida Keys, confirms that temperatures have been at or slightly exceeding 30°C over the past few weeks (Fig. 4), likely due in part to light to moderate wind conditions (Fig. 5). In-situ sea temperature data is currently only available at Fowey Rocks and intermittently at Molasses Reef. Sand Key is not recording wind data at this time. Mote Marine Laboratory will continue to monitor the NOAA HotSpot maps, DHW maps, and ICON sea temperature data from NOAA monitoring stations on a weekly basis for the remainder of the bleaching season.

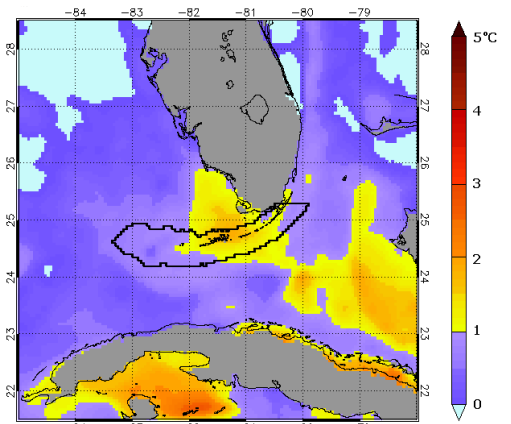


Figure 2. NOAA's Experimental 5km Coral Bleaching HotSpot Map for Florida July 25, 2018. coralreefwatch.noaa.gov/vs/gauges/florida_keys.php

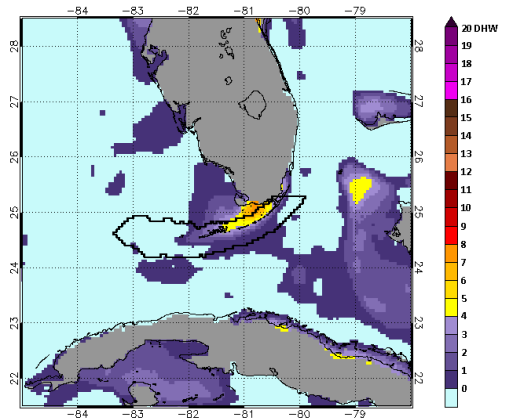


Figure 3. NOAA's Experimental 5km Degree Heating Weeks Map for Florida July 25, 2018. coralreefwatch.noaa.gov/vs/gauges/florida_keys.php

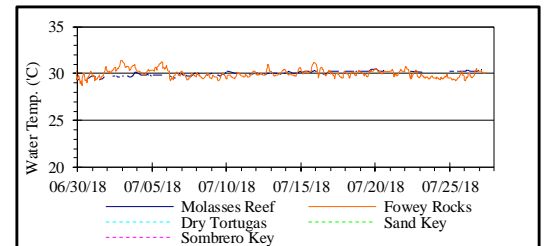


Figure 4. *in-situ* sea temperature from NOAA/ICON monitoring stations (June 30 – July 27, 2018).

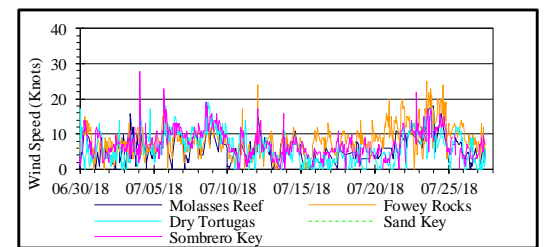


Figure 5. Wind speed data from NOAA/ICON monitoring stations (June 30 – July 27, 2018).



Current Coral Conditions

A total of 53 BleachWatch Observer reports were received during the past 4 weeks (Fig. 6), with 39 reports indicating isolated colonies exhibiting signs of paling or partial bleaching (Fig. 7) and the remaining 14 reports indicated no significant signs of coral bleaching or paling observed.

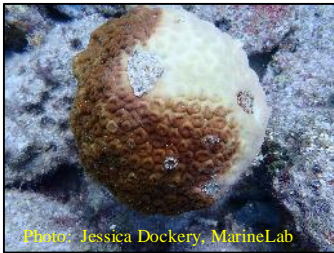


Photo: Jessica Dockery, MarineLab

Figure 7. Partially bleached *M. cavernosa* at Molasses Reef SPA on 7/20/18.

At those sites where paling was noted, the overall percentage of corals exhibiting signs of thermal stress was mostly 1-10%, however several reef sites noted up to 50% of corals affected. The majority of paling observations consisted of isolated colonies of Encrusting/Mound/Boulder corals; *Siderastrea siderea*, *Stephanocoenia intersepta*, *Montastraea cavernosa*, *Orbicella faveolata*, *Orbicella annularis*, *Porites astreoides* and *Siderastrea radians*, Brain corals;



Photo: Emily Hower

Figure 8. A *Diploria labyrinthiformis* with tissue loss disease at Rock Key SPA on 7/21/18.

Colpohyllia natans, *Meandrina meandrites*, *Pseudodiploria clivosa* and *Pseudodiploria strigosa*. and Flower Corals; *Eusmilia fastigiata*. Other observations included paling of *Palythoa spp.*, and Fire Coral as well as numerous reports of coral disease (Fig. 8). Due to increase in coral disease observations in the Middle and Lower Keys area, observers are encouraged to report if disease is both present or absent at their sites.

These isolated observations of paling and partial bleaching do not necessarily indicate that the onset of a mass bleaching event is currently underway; however, continued field observations are needed as more widespread coral bleaching could potentially develop if environmental conditions continue to favorable.

BleachWatch Reports for June 30-July 27, 2018

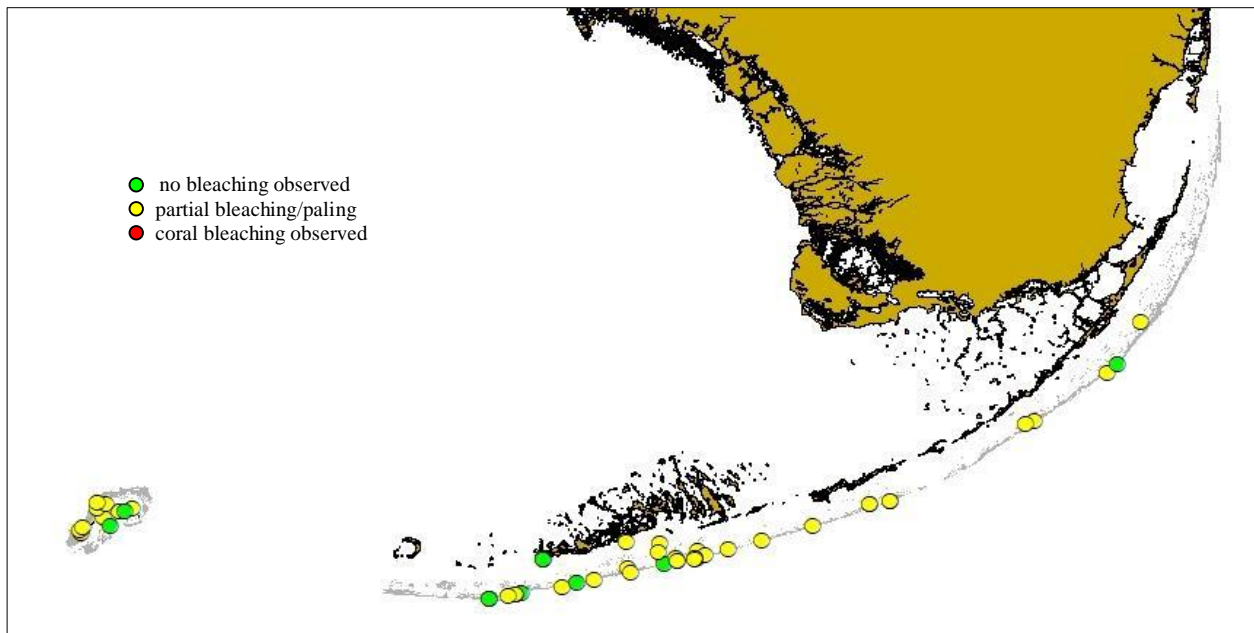


Figure 6. Overview of BleachWatch observer reports submitted from June 30-July 27, 2018



For more information about the BleachWatch program, or to submit a bleaching observation, contact:

Cory Walter
Mote Marine Laboratory
24244 Overseas Highway
Summerland Key, FL 33042
(305) 395-8730

<http://www.mote.org/bleachwatch>

FUNDING THANKS TO....

