



Updated November 20, 2025

Summary: Based on climate predictions, current conditions, and field observations, the threat for mass coral bleaching within the FKNMS is currently **LOW**.

NOAA Coral Reef Watch Current and 60% Probability Coral Bleaching Alert Outlook November 20, 2025 (experimental)

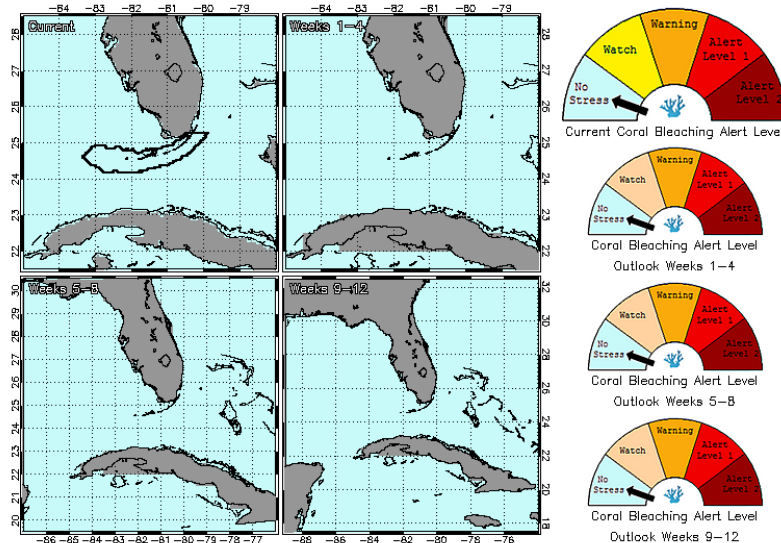


Figure 1. NOAA's 5 km Experimental Current and 60% Probability Coral Bleaching Alert Outlook Areas through February 2026. Updated November 20, 2025.

http://coralreefwatch.noaa.gov/vs/gauges/florida_keys.php

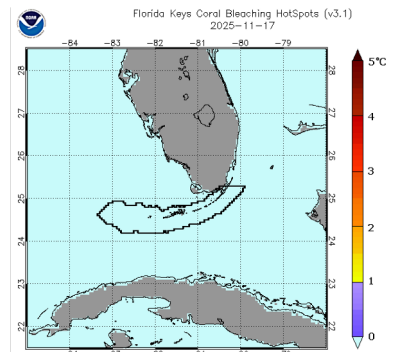


Figure 2. NOAA's Experimental 5km Coral Bleaching HotSpot Map for Florida November 20, 2025.

[NOAA Coral Reef Watch Website](https://coralreefwatch.noaa.gov)

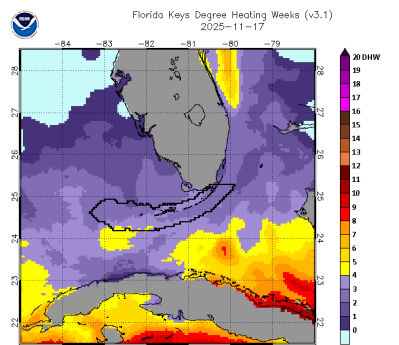


Figure 3. NOAA's Experimental 5km Degree Heating Weeks Map for Florida November 20, 2025.

[NOAA Coral Reef Watch Website](https://coralreefwatch.noaa.gov)

Weather and Sea Temperatures

According to the current NOAA Coral Reef Watch (CRW) experimental 5-kilometer (km) Satellite Current and 60% Probability Coral Bleaching Alert Area, all areas of the Florida Keys National Marine Sanctuary (FKNMS) have been reduced to "No Stress", indicating there is no longer a threat of mass bleaching this season for the Florida Keys. (Fig. 1).

Recent remote sensing analysis by NOAA's CRW program indicates that all areas of the Florida Keys region are currently experiencing little thermal stress. NOAA's new experimental 5 km Coral Bleaching HotSpot Map (Fig. 2), which illustrates current sea surface temperatures compared to the average temperature for the warmest month, shows sea surface temperatures are not currently elevated above normal in the Florida Keys. However, NOAA's experimental 5 km Degree Heating Weeks (DHW) map (Fig. 3), which illustrates how much heat stress has built up over the past 12 weeks, indicates accumulating temperature stress remains evident, but has decreased in the past months. Florida Keys National Marine Sanctuary (FKNMS) Aqualink, which provides near real time *in-situ* wind data at Mote's Sand Key Coral Nursery, as well as Aqualink *in-situ* temperature data report that temperatures have been at or well below 30°C over the past month (Fig. 4), likely due to the fall season and, in part, to elevated wind conditions observed during the same period (Fig. 5). Due to current environmental conditions and the bleaching alert status of "No Stress", this will be the final current conditions report for the 2023 Florida Keys BleachWatch season.

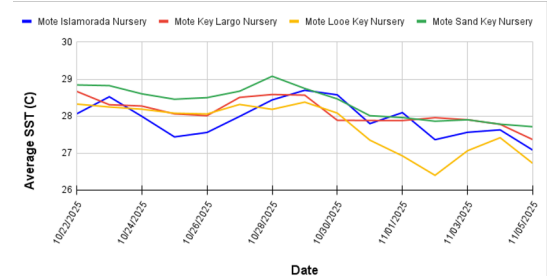


Figure 4. *in-situ* sea temperature from Aqualink monitoring stations (October 22 – November 20, 2025).



Figure 5. Wind speed data from Aqualink's Mote Sand Key Coral Nursery monitoring station (October 22 – November 20, 2025).



Mote Marine Laboratory / Florida Keys National Marine Sanctuary

Coral Bleaching Early Warning Network

Current Conditions Report #20251120



Current Coral Conditions

A total of 14 BleachWatch observer reports were received between October 22 – November 20, 2025 (Fig. 6), with 13 reports indicating colonies exhibiting signs of paling, partial bleaching, or bleaching (Fig. 8). One report indicated no significant signs of coral bleaching at sites surveyed. At those sites where paling/bleaching was noted, the overall percentage of corals exhibiting signs of stress was 1-30% and majority of paling/partial bleaching observations consisted of isolated colonies of brain / bouldering and branching coral species. Other observations included paling and bleaching of *encrusting fire coral*, *palythoa*, and seven reports of coral disease, including one black band disease report and several reports of tissue loss.

The 2025 Florida Keys BleachWatch season has officially come to an end, with a total of 192 reports submitted by BleachWatch observers and researchers (Fig. 7). Observer reports verified that major signs of coral bleaching were observed in the Florida Keys region in 2025, with most reports noting paling or partial bleaching (Fig. 8) and with up to 100% of corals affected at some sites. Based on current environmental conditions significant coral bleaching in the Florida Keys National Marine Sanctuary and surrounding waters seems highly unlikely to continue at this time. As a result, this will be the final current conditions report for 2025.

**THANK YOU TO ALL OF OUR
BLEACHWATCH OBSERVERS FOR 2025!!!**

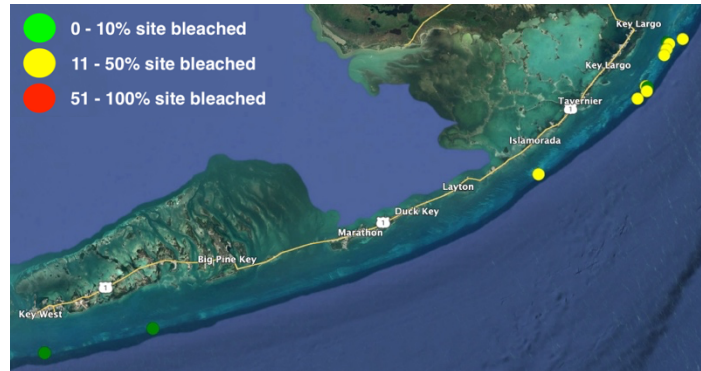


Figure 6. Overview of BleachWatch reports from October 22 – November 20, 2025

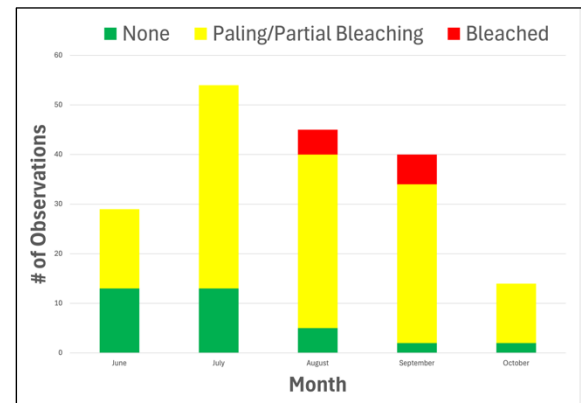


Figure 8. Bleaching severity reported by month from June – October 2025

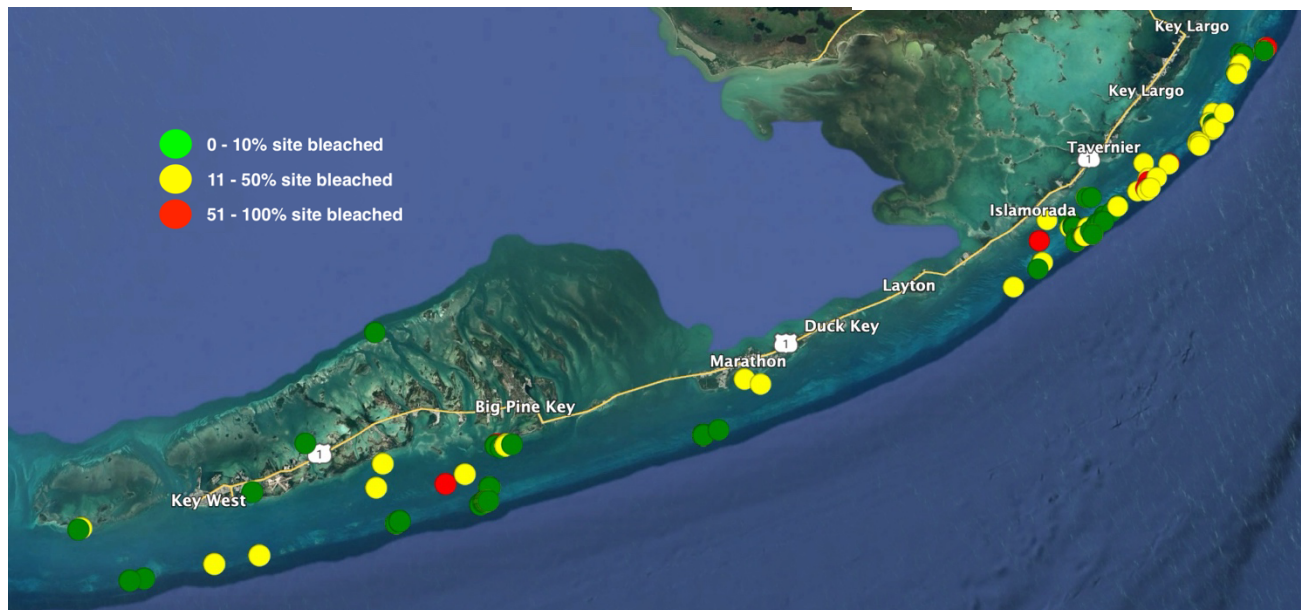


Figure 7. Summary map of all Florida Keys BleachWatch Observer reports submitted during the 2025 coral bleaching season.

**For more information about the BleachWatch program,
or to submit a bleaching observation, contact:**

Email: bleachwatch@mote.org
<http://www.mote.org/bleachwatch>

